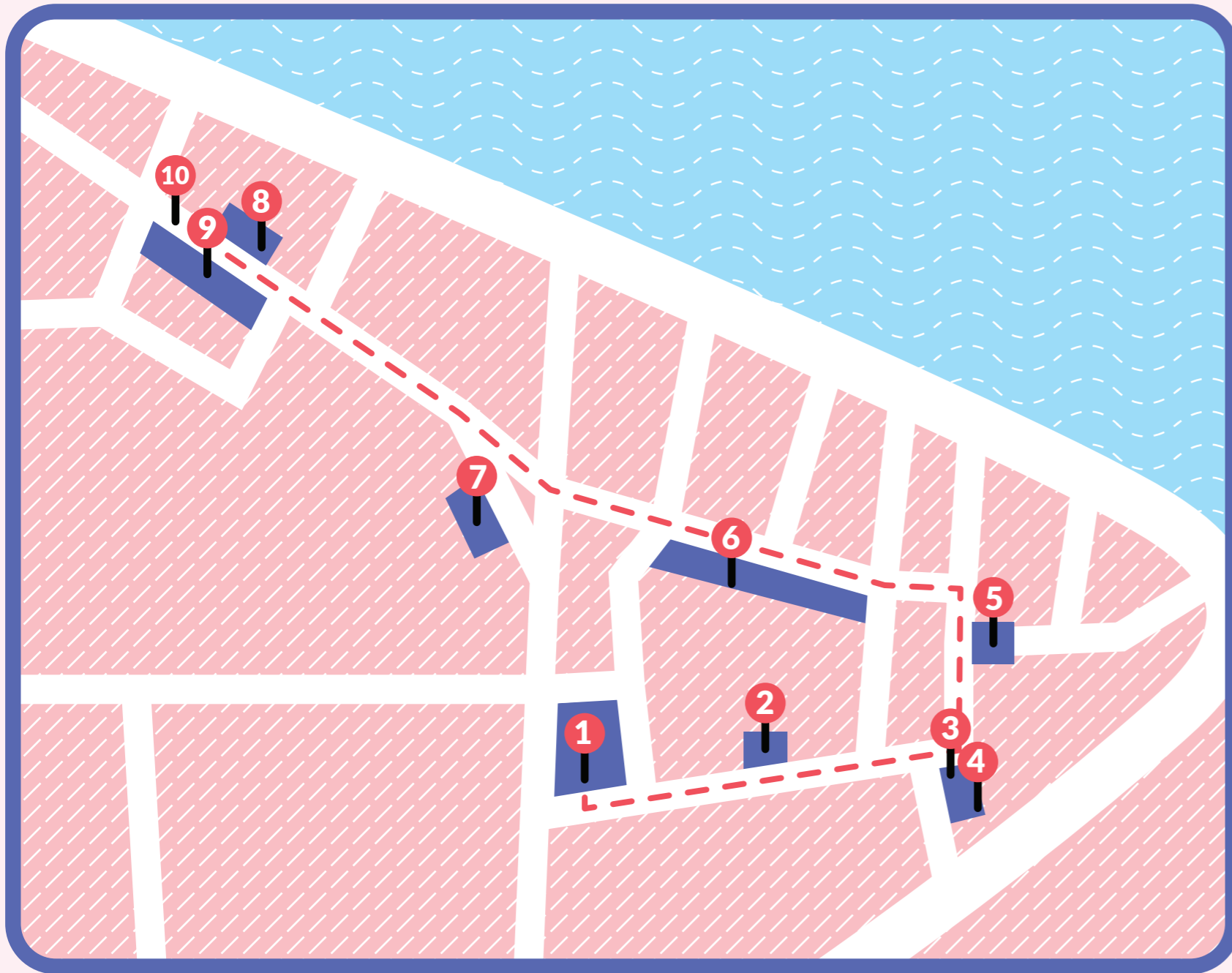


Waterford UNESCO Lifelong Learning Festival - Scavenger Hunt



1 - Central Library Lady Lane:

Enter and enjoy the Lifelong Learner Photo Exhibition.

Bonus! Take a photo at the mirror! #IAmALifeLongLearner.

2 - Next Stop:

Follow the church and 6 towers to something blue.

Whose station first stood on this site? _____

3 - Towards the Viking Triangle:

Marriage of Aoife and Strongbow 25th _____ 70.

You will find a _____ by his left side.

4 - Under the steel NYC skyline:

In memoriam; _____ we _____

5 - Stand where the cathedral watches over the square:

How many squares on the chess board? _____

6 - Walk through An tSráid Árd/An tSráid Mhór:

Keep your path straight.

You are on the right track if you pass the spinner, potter, glassblower, fish crier, turf carrier and basket maker.

7 - Seek the Book Centre window.

Among the books on displays, a clue waits.

Can you find it? _____

8 - Into the Cultural Quarter.

Your next stop: Waterford Gallery of Art.

Somewhere inside you will discover: 12 - Self Portrait.

Bonus! At the back, become an artist yourself.

Create your own mini portrait.

9 - Garter Lane - Through the Archway.

On your way upward, watch your right, there grows a wall of wheat.

Inside the exhibition 'Outlandish': Find the two dogs.

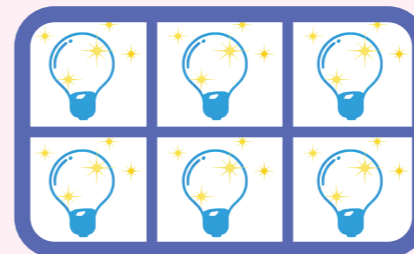
10 - One Final Glance

The next building holds your last clue.

Look carefully in the window.

The answer waits in plain sight.

Cryptic Clue Answer _____



Lifelong Learner Bingo!

Search, discover, and tick each box as you find the bright ideas hidden along the scavenger hunt.

Return your completed sheet, with your preferred contact details to the library post box or drop it into Waterford Gallery of Art.

Input the solved cryptic code work online via our 'contact us' page.

Scan QR code below, or go to <https://waterfordlearningcity.ie/contact-us/>



Prizes await the keenest hunters!

#IAmALifeLongLearner

Enjoy the scavenger hunt at your own pace and discover the city through a new lens.

Check out our festival programme and pop into an event along the way.

While you're exploring, try the Waterford Digital Story Trail: <https://digitalstorytrail.visitwaterford.com/> and the Waterford Cultural Quarter Quaker Trail: <https://waterfordculturalquarter.ie/quaker-trail/>.

Many thanks to Vadim Taranenko and Waterford Gallery of Art for the map design.

This Lifelong Learning Scavenger Hunt is part of Waterford's first Lifelong Learning Festival as a UNESCO Learning City.

Visit our website to find out more! <https://waterfordlearningcity.ie/festival/>

